

ABOUT HEALTHY LODDON CAMPASPE



Healthy Loddon Campaspe (HLC) is a State Government-funded initiative aimed at improving health outcomes in the Loddon Campaspe region – the heart of Victoria.

The initiative was developed in response to the region showing higher than Victorian average rates of obesity, chronic disease and high-risk health behaviours.

HLC projects are designed to focus on those parts of the community that are the least supported to help encourage healthy eating and get more people, more active, more often.

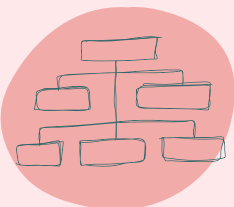
OUR REGION

The Loddon Campaspe region is made up of six local Councils – City of Greater Bendigo, Campaspe, Central Goldfields, Loddon, Macedon Ranges and Mount Alexander Shires.

Each Council has a dedicated place-based HLC Health Broker whose role is to make health everyone's business – developing relationships between Council, local organisations and community groups to help build knowledge and influence decision making with respect to health and wellbeing.

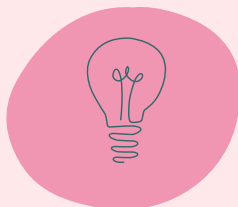


COMPONENTS OF HLC



Governance

HLC incorporates a light-touch, participatory governance structure which provides opportunity for a range of expertise and place-based knowledge to guide and support our work. The three levels of governance ensure broad achievement of our objectives, whilst allowing for locally driven decision making and delivery of activities.



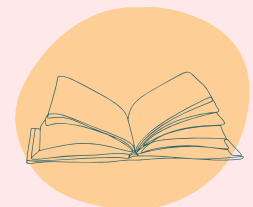
Health Brokers

A mix of place-based and regional specialists working to influence and impact local and regional systems, particularly through influencing policy development and local practice, building awareness and engagement of HLC and monitoring and evaluating the effectiveness of HLC's work, with a focus on making health everyone's business.



Activation

Local and regional projects focused on creating healthy spaces, places and practices to support an increase in physical activity and healthy eating among target populations. Place-based activation projects are designed based on community-level data and local stakeholder and community engagement.



Data and research-driven approach

Place-based data collection to help inform planning, projects, funding opportunities and to undertake and collaborate on research.

This includes use of the 2019 ALC data and potential delivery of a re-envisioned ALC.